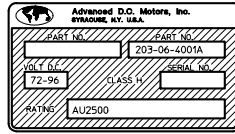
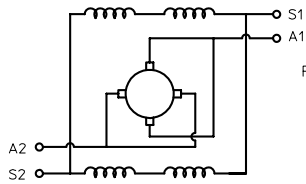
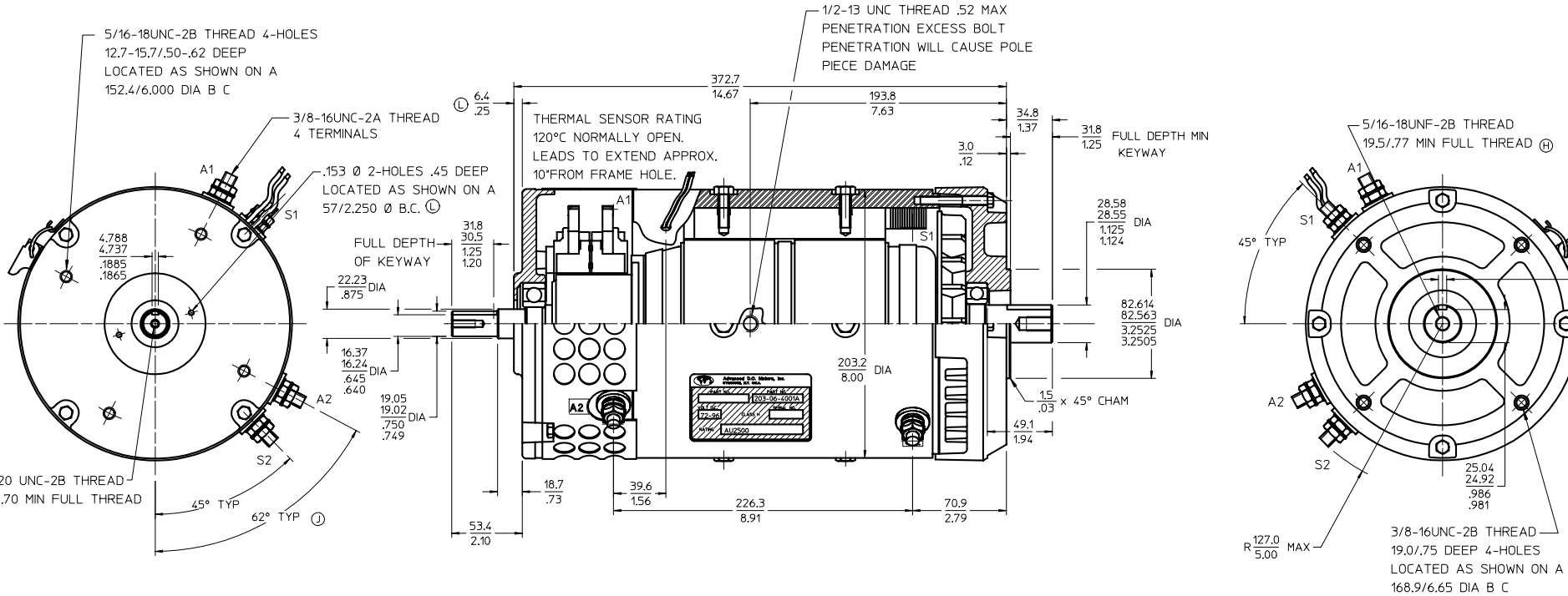


Notice - Advanced D.C. Motors, Inc. claims proprietary rights in the information disclosed on this drawing. It is issued in confidence for engineering information only and may not be used, in whole or in part, to manufacture anything, whether or not shown hereon, reproduced or disclosed to anyone without direct written permission from Advanced D.C. Motors, Inc.

-NAME LABEL STAMPED WITH ADVANCED PART NO. 203-06-4001A & 72-96 VOLTS
 -NAME LABEL STAMPED WITH U.L. ID. NO. AU2500 & CURRENT DATE IN RATING BOX
 -CODE DATE STAMPED ON FRAME NEAR NAME LABEL



OUTLINE DIMENSIONS ARE NOMINAL UNLESS TOLERANCES ARE SPECIFIED



WIRING DIAGRAM

ROTATION - REVERSIBLE
 C.W.D.E.
 CONNECT S1 TO ONE BATTERY TERMINAL
 CONNECT S2 TO A1
 CONNECT A2 TO OTHER BATTERY TERMINAL
 C.C.W.D.E.
 CONNECT S1 TO ONE BATTERY TERMINAL
 CONNECT S2 TO A2
 CONNECT A1 TO OTHER BATTERY TERMINAL

-CLASS "H" INSULATION
 -FINISH: FRAME-BLACK PAINT
 END HEADS-NATURAL ALUMINUM
 -VENTILATED MOTOR WITH FAN
 -DESIGNED WITH INTENT TO MEET U.L. SPEC# 583 LATEST EDITION FOR TYPE "E" & "EE" INDUSTRIAL ELECTRIC MOTORS
 -PERFORMANCE CURVE: C-178 ⓐ
 -MOTOR WEIGHT - 107lbs
 -MOTOR DESIGNED TO OPERATE IN C.C.W. ROTATION FORWARD VEHICLE OPERATION

| Zone | Rev | Was | By | Date |
|------|-----|------------------------------|---------|----------|
| D-4 | L | CONFORMED TO DETAL PCR# 3346 | PJB | 10-05-99 |
| | K | WAS C-69 | PCR#854 | 11-17-94 |
| | J | WAS 57° | PCR#62 | 08-02-93 |
| | H | WAS 25.4 / 100 DP. MIN. | PCR#57 | 07-15-93 |
| | | REDRAWN LAST REV. G | MM | 15-07-93 |

Metric/Rev

This print is the property of Advanced D.C. Motors, Inc. and supersedes all prints previous to last revision. Do not scale work to dimensions.

| | | |
|------------------------|-------------------|-------------|
| 72-96 VOLTS | | PROJECTION |
| MILLIMETER / INCHES OR | MILLIMETER INCHES | THIRD ANGLE |

Advanced D.C. Motors, Inc. Syracuse, N.Y.

Name TRACTION MOTOR OUTLINE

Scale 5/8 Drawn Date 10-07-91

Part No 203-06-4001A

XP-1108